

REVISION HISTORY				
REV	DATE	DESCRIPTION	ECO	BY
A	5/16/2016	PRODUCTION RELEASE	15279	MMG
B	10/19/2016	REPLACE 110-3708 (2) WITH 110-3948 (2)	15563	MMG
C	2/10/2017	REMOVE: 110-3487 (3), 130-1785 (1), 130-1853 (1), 140-3610 (2); ADD: 711-3518 (1)	15663	MMG
D	6/20/2017	UPDATE NOTES 8 AND 9, ADD NOTES 11, 12, AND 13	15738	MMG
E	6/6/2018	REMOVE: 110-3140 (1), 740-7842 (1); ADD: 110-4840 NOTE 3: CHANGE TORQUE SPEC FROM 23 Nm TO 34 Nm NOTE 9: CHANGE BELT TENSION FROM 60-65 Hz to 80-90 Hz	15977	MMG

ITEM NO.	PART NUMBER	DESCRIPTION	QTY.
1	020-7658	BRACKET, ALTERNATOR, TRANS W/ BRAKE, GAUNTLET	1
2	110-0575	Screw, 1/4-20, 1.25", HHC, HE,CS, ZP	1
3	110-0610	BOLT, 1/2-13x2.5,HHC,HE,CS,ZI	1
4	110-1833	NUT, 1/2-13, NYLOK HEX, CS, ZP, GR 8	2
5	110-3098	NUT, 1/4-20, HEX, NYLOC	2
6	110-3099	SCREW, 1/4-20, 1.5" HHCS, CS, ZP, GR 5	2
7	110-3340	SCREW, 1/2-13, 2", HHCS, CS, ZP, GR 8	1
8	110-3478	SCREW, 1/4-20, 1", HHCS, CS, ZP, GR 5	2
9	110-3948	SCREW, 1/4-20, 3/4", HHFS, CS, ZP, Gr-8	2
10	110-4080	SCREW, 5/16-18, 3/4", HHC, HE, AS, ZP, SERRATED FLANGE, GRD-8	1
11	120-0410	WASHER, 1/4, SAE FLAT	2
12	120-0425	WASHER, FLAT, 1/4x7/8ODx.047	2
13	120-3030	WASHER, 1/2 X 1.0625 OD X .093	2
14	130-1784	BELT, 200J6, POLY-V	1
15	130-1787	SPROCKET, IDLER, Ø.5"ID, 15T, #40	1
16	130-1791	ASSY, SPROCKET, Ø5/8"ID, 14T, #40	1
17	140-3491	SPRING, EXT, OD: 15.85mm, SD: 1.75mm, RNG: 25.5-45.5mm	1
18	260-0958	BRAKE, POWER-OFF, SM	1
19	300-0178	TOOL, ALIGNMENT, BRAKE, GAUNTLET	1
20	711-3334	GEARBOX, 19:1, BISON	1
21	711-3336	ARM, TENSION, CHAIN, E-SM	1
22	711-3361	ASSY,W/ COUNTER, ALTERNATOR, 1.5" PULLEY	1
23	711-3426	KEY, 0.190 X 0.190 X .500	1
24	711-3446	MOUNT, BRAKE, GAUNTLET	1
25	711-3506	ASSY, CATCH W/ INSERT, GEARBOX, BISON, GAUNTLET	1
26	711-3508	ASSY, MOUNT, ALIGNMENT TOOL, BRAKE, GAUNTLET	1
27	711-3518	ASSY, PULLEY W/ ADAPTER, DRIVETRAIN, 8-GAUNTLET	1
28	731-1957	NUT, M5X0.8, NYLOC, AS, NKL, Gr-10	3
29	731-1958	SCREW, M5X0.8, 20mm, SHC, HK, AS, NKL, Gr-12.9	3

DOCUMENT STATUS:

NOTICE OF PROPRIETARY INFORMATION
THIS DOCUMENT SHALL NOT BE REPRODUCED NOR SHALL THE INFORMATION CONTAINED HEREIN BE USED BY OR DISCLOSED TO OTHER EXCEPT AS EXPRESSLY AUTHORIZED BY CORE HEALTH & FITNESS, LLC.

CLASS OF WORK	UNLESS OTHERWISE SPECIFIED DIMS ARE IN mm. TOLERANCES FOR MEASURE OF LENGTH ARE:							ANGLES = ±2°		
	0.5 to 3	> 3 to 6	> 6 to 30	> 30 to 120	> 120 to 400	> 400 to 1000	> 1000 to 2000	> 2000		
FINE	±0.05	±0.05	±0.1	±0.15	±0.2	±0.3	±0.5	----		
MEDIUM X	±0.1	±0.1	±0.2	±0.3	±0.5	±0.8	±1.2	±2		
COARSE	±0.2	±0.3	±0.5	±0.8	±1.2	±2	±3	±4		
VERY COARSE	----	±0.5	±1	±1.5	±2.5	±4	±6	±8		

MATERIAL SEE BOM

FINISH N/A

VENDOR: N/A

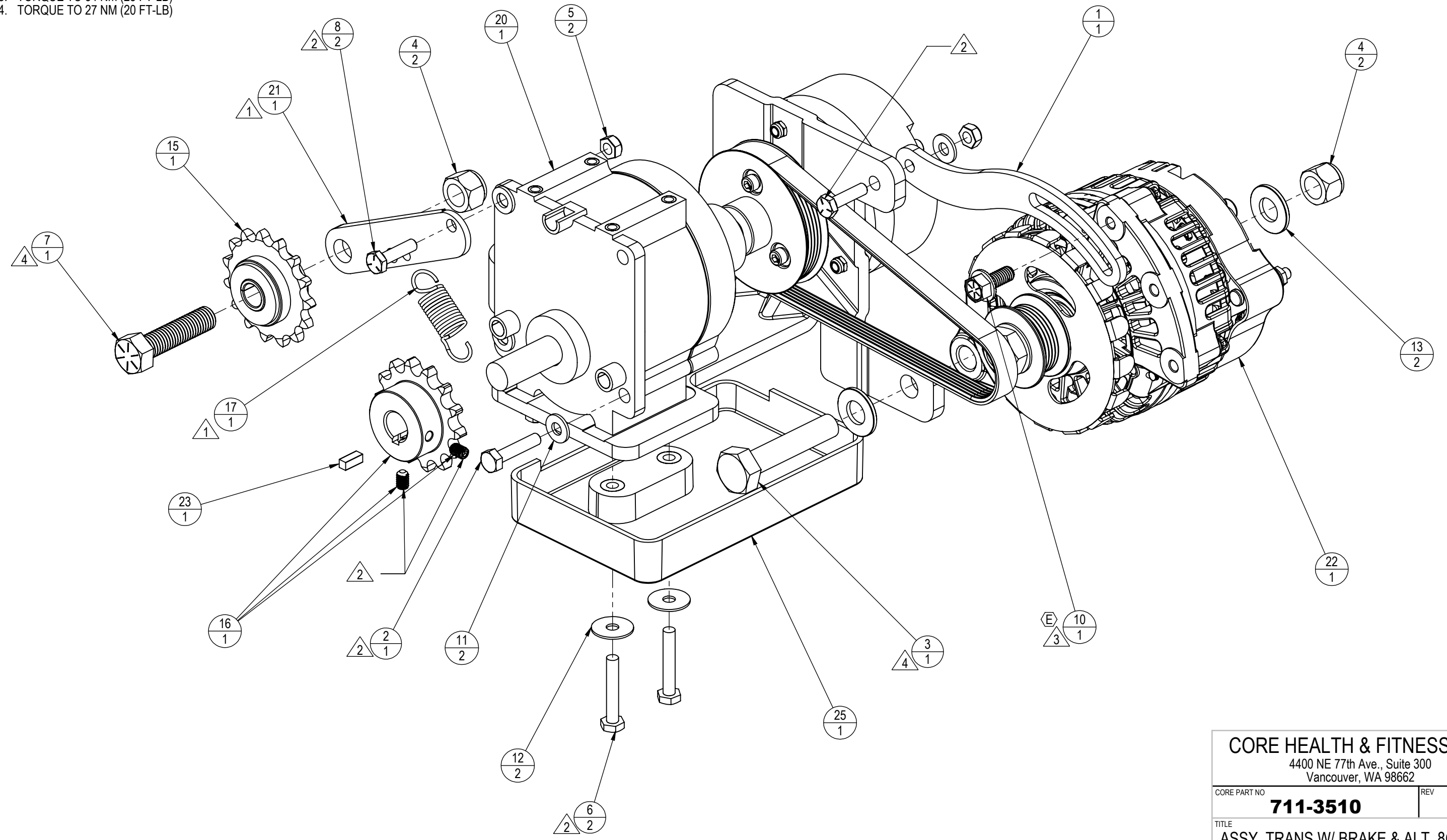
P/N: N/A

THIRD ANGLE PROJECTION		
DRAWN	INITIAL MMG	DATE 06/06/2018
CHECKED		
APPROVED		

CORE HEALTH & FITNESS, LLC 4400 NE 77th Ave., Suite 300 Vancouver, WA 98662		
CORE PART NO	711-3510	REV E
TITLE ASSY, TRANS W/ BRAKE & ALT, 8G		
SCALE: 1:3	SHEET 1 OF 4	SHEET SIZE: B

NOTES:

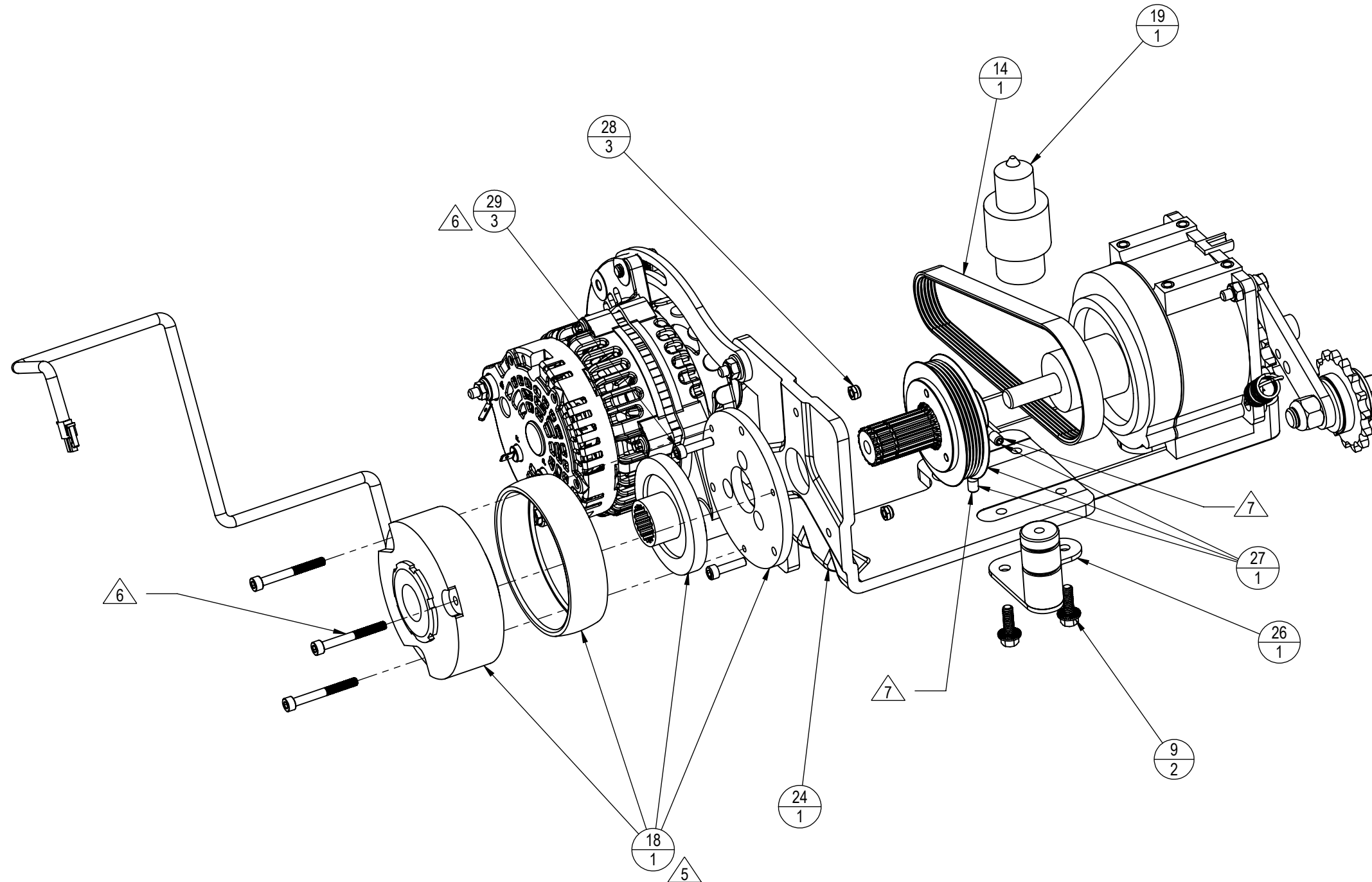
1. DRIVE CHAIN TENSIONING SPRING (P/N 140-3491) TO BE HOOKED INTO SMALLER HOLE OF IDLER ARM (P/N 711-3336)
2. TORQUE TO 10.8 Nm (8 FT-LB)
3. TORQUE TO 34 Nm (25 FT-LB)
4. TORQUE TO 27 NM (20 FT-LB)



<p>CORE HEALTH & FITNESS, LLC 4400 NE 77th Ave., Suite 300 Vancouver, WA 98662</p>		
CORE PART NO	711-3510	REV E
TITLE ASSY, TRANS W/ BRAKE & ALT, 8G		
SCALE: 1:2	SHEET 2 OF 4	SHEET SIZE: B

NOTES:

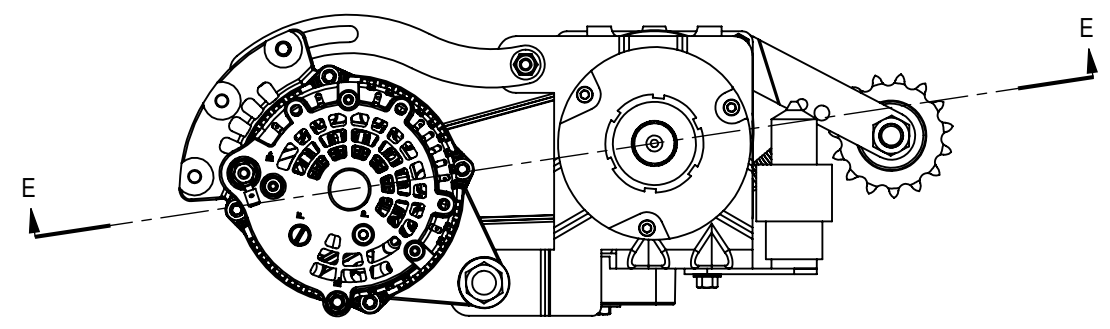
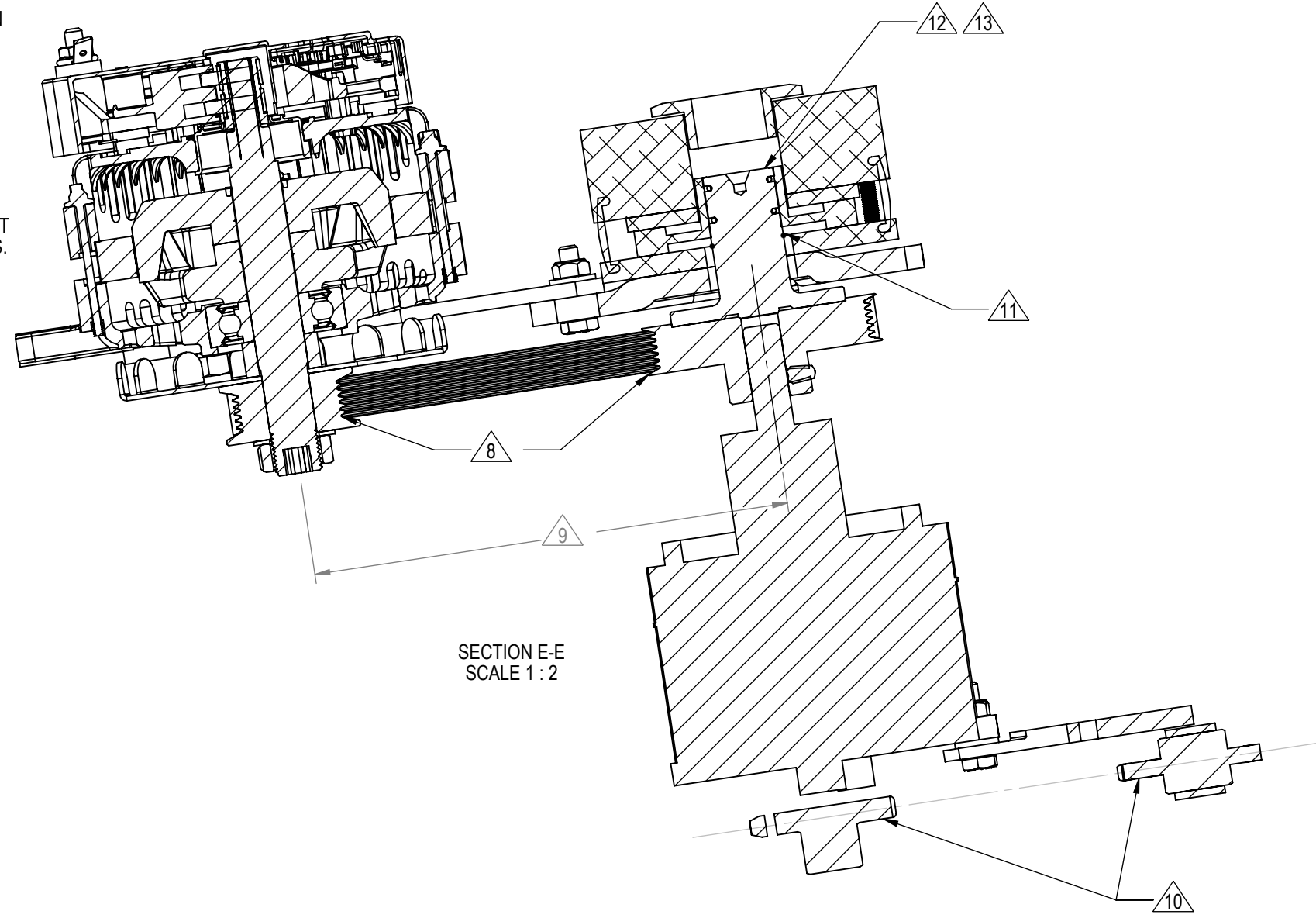
- 5. PRESSURE PLATE MUST BE REMOVED TO ATTACH BRAKE (P/N **260-0958**) TO MOUNT (P/N **711-3446**) WITH BOLTS (P/N 740-4539) AND NUTS (P/N **740-0013**)
- 6. TORQUE TO 12 Nm (8.8 FT-LB)
- 7. TORQUE TO 10.8 Nm (8 FT-LB)



CORE HEALTH & FITNESS, LLC 4400 NE 77th Ave., Suite 300 Vancouver, WA 98662		
CORE PART NO	711-3510	REV E
TITLE ASSY, TRANS W/ BRAKE & ALT, 8G		
SCALE: 1:3	SHEET 3 OF 4	SHEET SIZE: B

NOTES:

- 8. ALIGN TEETH ON PULLEY OF ALTERNATOR (711-3361) TO TEETH ON PULLEY OF BRAKE ADAPTER (711-3519).
- 9. TENSION ALTERNATOR BELT (P/N 130-1784) TO 80-90 Hz
- 10. ALIGN SPROCKET TEETH TO CENTER OF CHAIN IN PARENT ASSEMBLY
- 11. APPLY A LIGHT FILM ~0.5 cc OF "SUPER LUBE" SILICONE LUBRICATING GREASE TO O-RING ON BASE OF BRAKE DISC (260-0958). DO NOT ALLOW GREASE TO CONTAMINATE THE FLAT FACE OF THE BRAKE DISC.
- 12. FOR ASSEMBLY, USE A GENTLE ROCKING MOTION TO "WALK" THE BRAKE DISC (260-0958) ONTO THE SPLINE SHAFT (711-3518). DO NOT USE A HAMMER OR Mallet. DOING SO WILL DAMAGE THE O-RINGS.
- 13. WIPE EXCESS GREASE AFTER ASSEMBLY.



CORE HEALTH & FITNESS, LLC 4400 NE 77th Ave., Suite 300 Vancouver, WA 98662		
CORE PART NO	711-3510	REV E
TITLE ASSY, TRANS W/ BRAKE & ALT, 8G		
SCALE: 1:4	SHEET 4 OF 4	SHEET SIZE: B